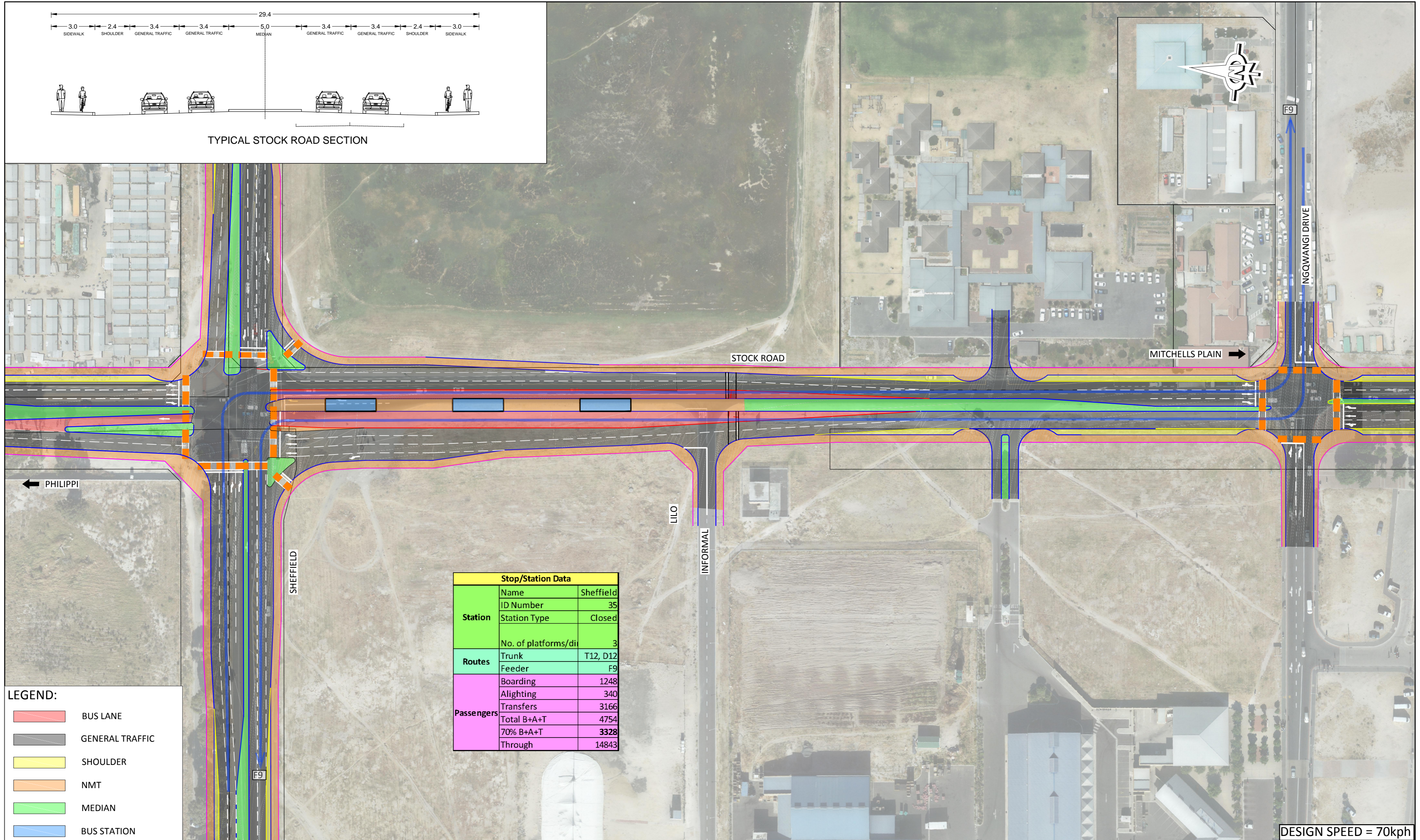


TYPICAL STOCK ROAD SECTION



| Stop/Station Data | | |
|-------------------|---------------------|-----------|
| Station | Name | Sheffield |
| | ID Number | 35 |
| | Station Type | Closed |
| Routes | No. of platforms/di | 3 |
| | Trunk | T12, D12 |
| Passengers | Feeder | F9 |
| | Boarding | 1248 |
| | Alighting | 340 |
| | Transfers | 3166 |
| | Total B+A+T | 4754 |
| | 70% B+A+T | 3328 |
| Through | 14843 | |

LEGEND:

| | |
|--|-----------------|
| | BUS LANE |
| | GENERAL TRAFFIC |
| | SHOULDER |
| | NMT |
| | MEDIAN |
| | BUS STATION |

DESIGN SPEED = 70kph

| NO | DATE | DESCRIPTION | CHECK | APP. |
|----|------------|--------------------------------------|-------|------|
| 02 | 30-04-2015 | Feeder route and station data added. | SP | |
| 01 | 20-02-2015 | Sheffield Intersection revised. | SP | |

| | |
|----------|----------------|
| SURVEYED | |
| DESIGNED | SP |
| DRAWN | YW |
| CHECKED | SP |
| APPROVED | CHIEF ENGINEER |

| | |
|---|---|
| MELISSA WHITEHEAD COMMISSIONER : TRANSPORT FOR CAPE TOWN | |
| DAVE. HUGO DIRECTOR: INFRASTRUCTURE | MADDIE MAZAZA DIRECTOR: PLANNING |
| RON HAIDEN Pr Eng. MANAGER: PUBLIC TRANSPORT INFRASTRUCTURE | GERSHWIN FORTUNE MANAGER: SYSTEM PLANNING & MODELLING |

| | |
|---|--|
| IRT: CONSTRUCTION OF PUBLIC TRANSPORT INFRASTRUCTURE FOR PHASE 2a LANSDOWNE - WETTON CORRIDOR STOCK ROAD - SHEFFIELD TO NGQWANGI DRIVE | |
| SCALE 1:1000 | DISCIPLINE: CE = CIVIL ENG. ARC = ARCHITECT EE = ELEC. ENG |
| SHEET A2 | INFRA. TYPE: ST = BUS STOP S = STATION D = DEPOT B = BUSWAY |
| | PROJ. Name: IRT - 2a - B - CE - SR - 3 - S - 02 |
| | STATUS CODES: S = SPATIAL CONCEPT T = TENDER C = CONSTRUCTION A = AS-BUILT |

